

**GENERAL NOTES**

1. All work embodied in this plan shall be done in accordance with the specifications and Standard Specifications No. 2571 and Standard Specifications No. 2581 on file in the office of the City Engineer.
2. Exact locations and widths to be determined in field. Limits not to exceed City Standard.
3. Organizational Street Lighting facilities shall be determined by the City Engineer.
4. All work shall be done in accordance with the applicable provisions of Ordinance No. 1984.
5. BENCH MARK: @ 2nd St & Meridian Ave Elev. 1190.20

Note: Chip out and replace any sections of paving damaged by tree removal.

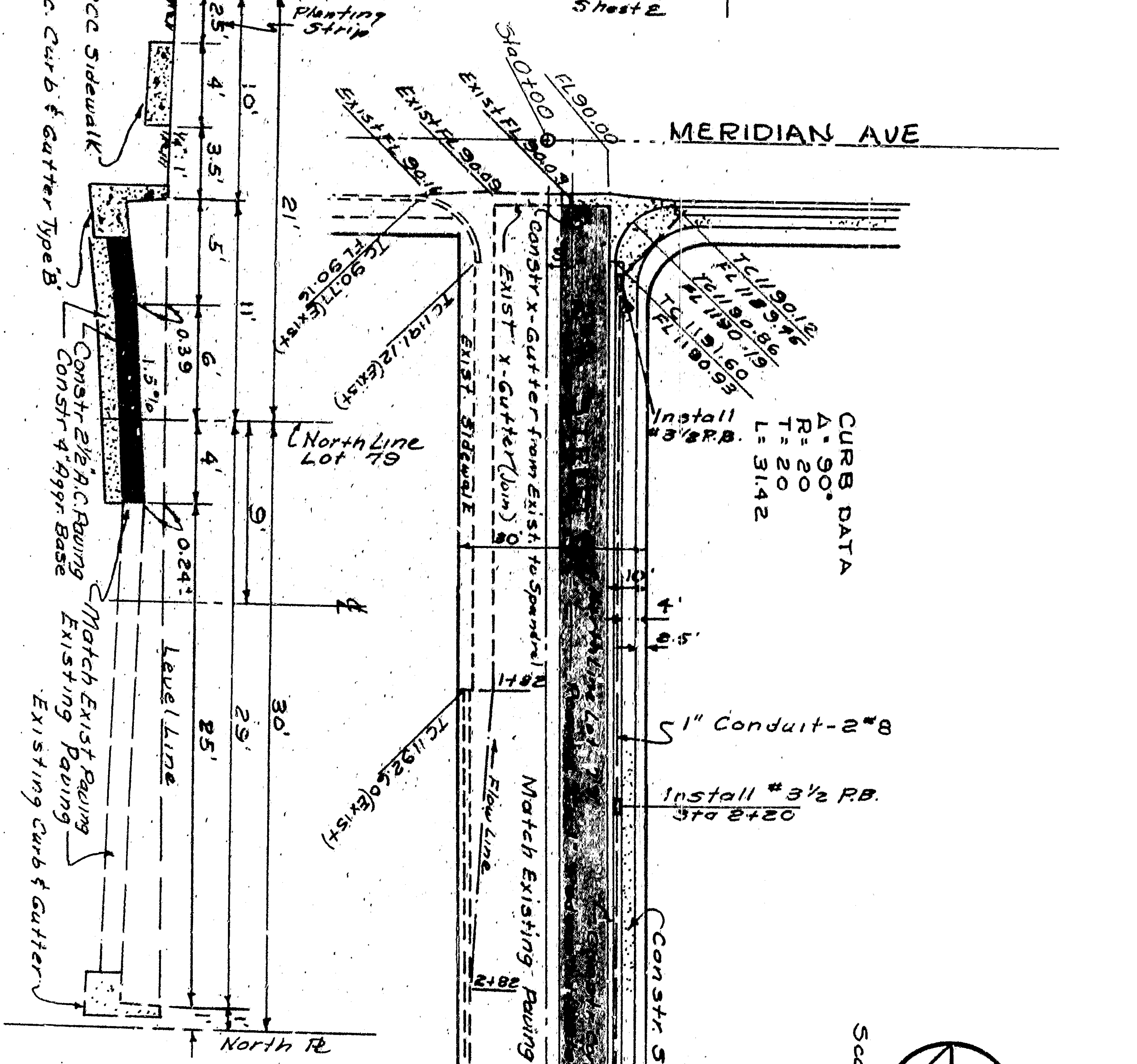
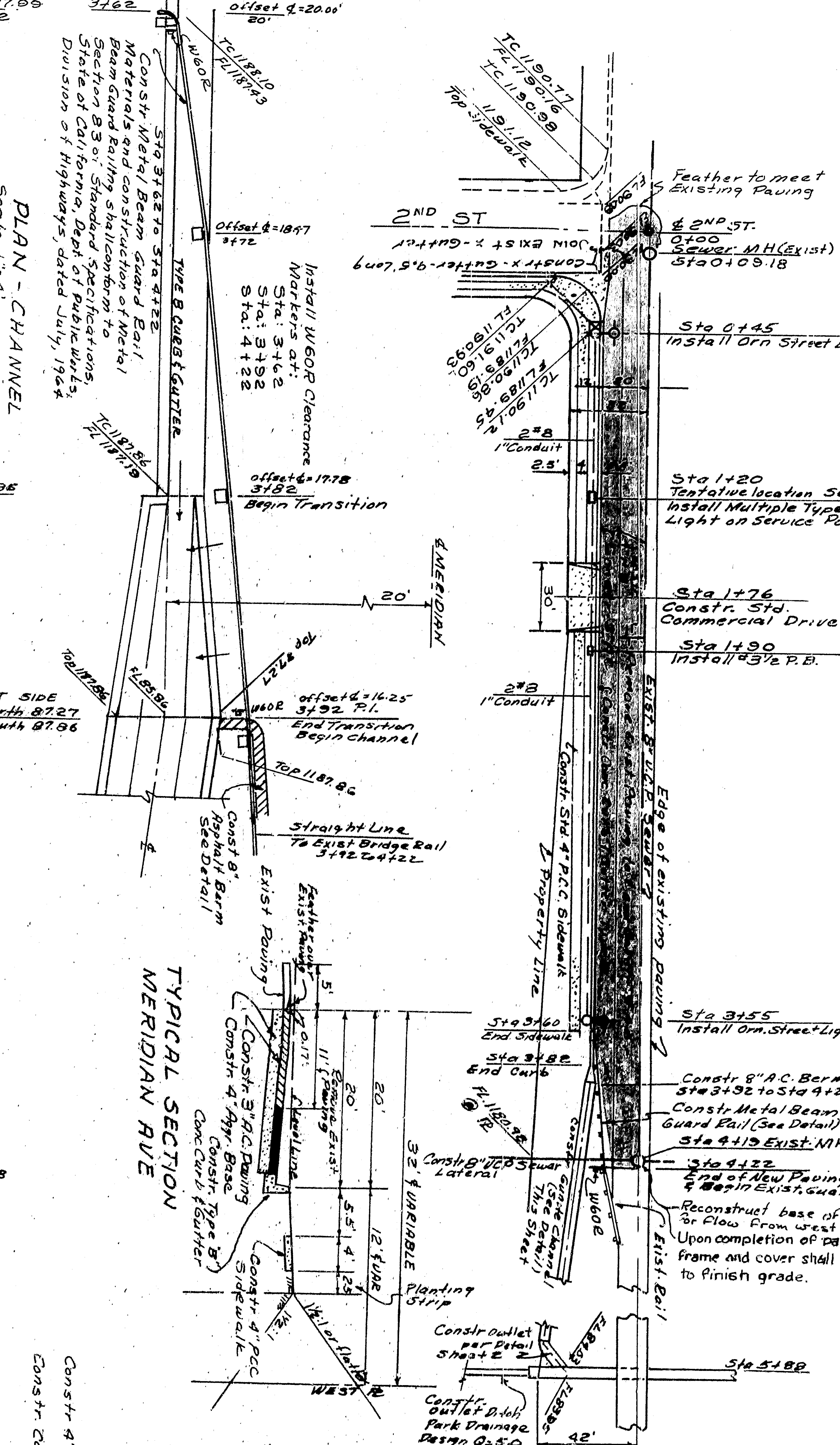
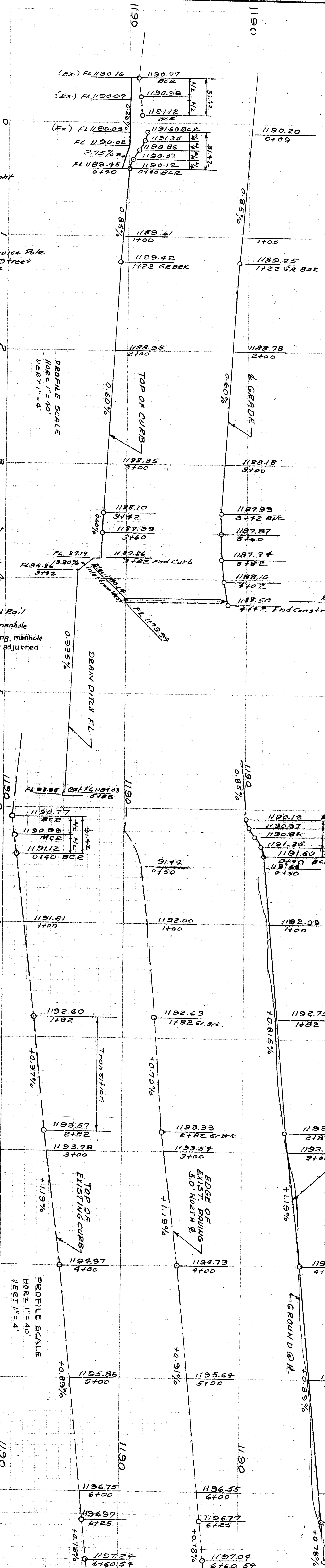
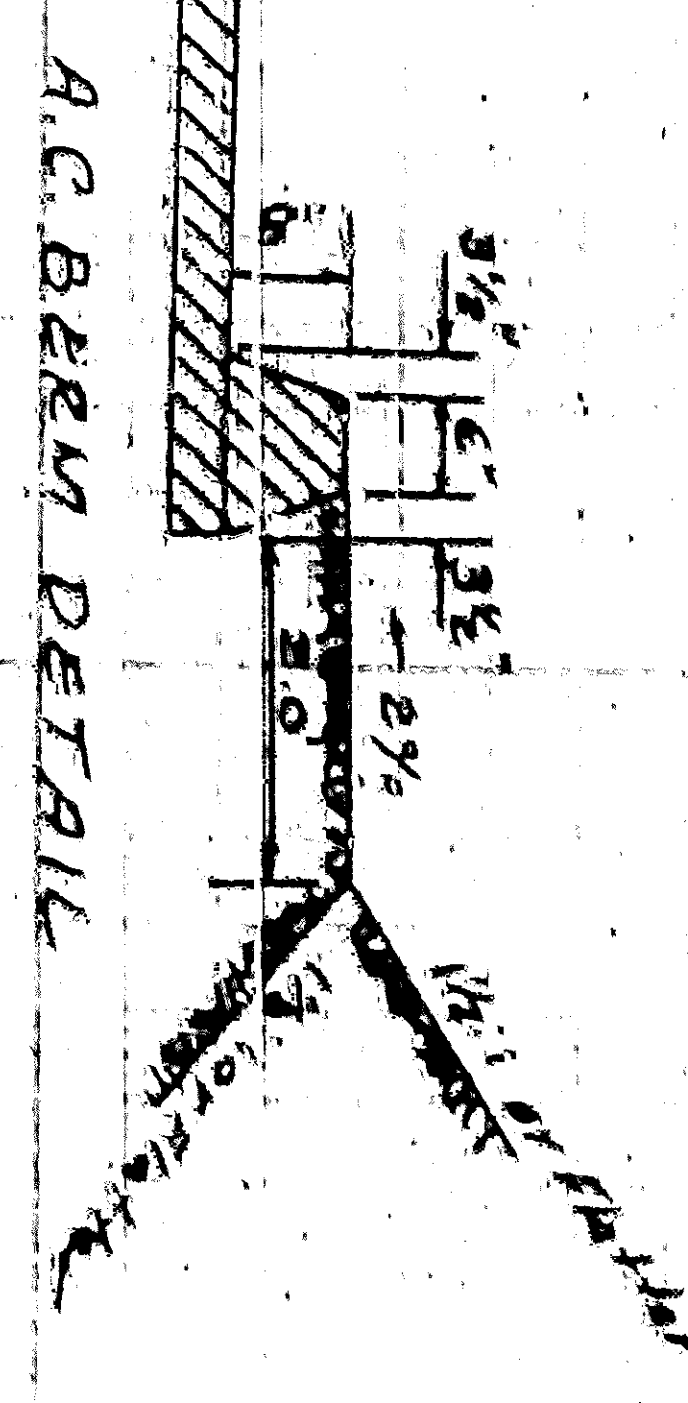
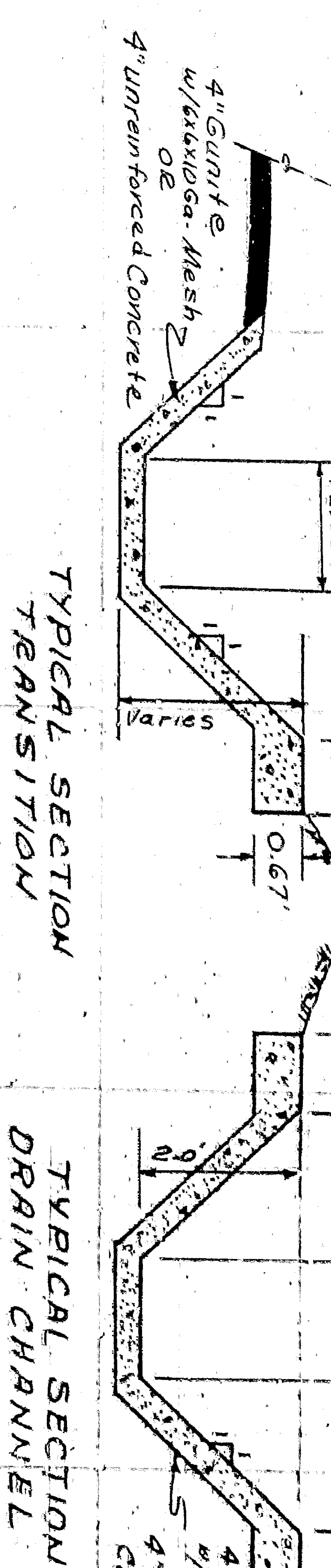
**STONE ENGINEERING**

APPROVED: *Roger Stone*  
 Dec 14, 1965  
 CITY ENGINEER  
 DEPARTMENT OF ENGINEERING  
 CITY OF SAN BERNARDINO  
 SECOND ST & MERIDIAN AVE  
 OFFSITE IMPROVEMENTS

DWG NO. 3294  
 DRAWN BY: RGS  
 CHECKED BY: JCS

SHEET 13

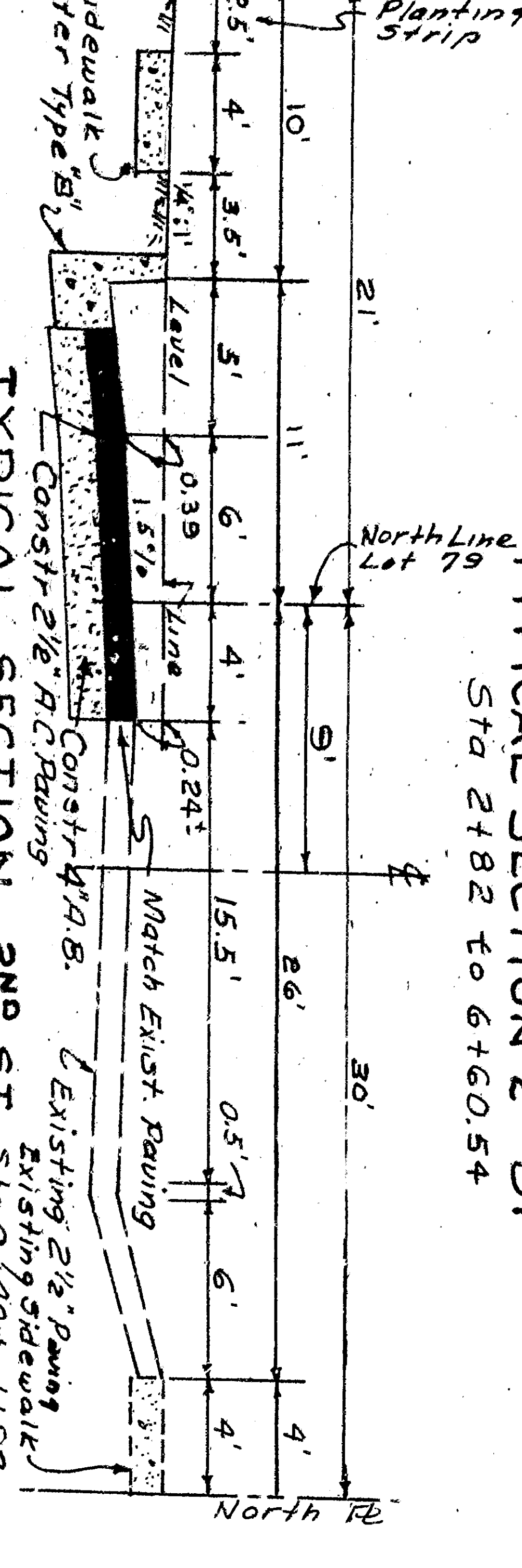
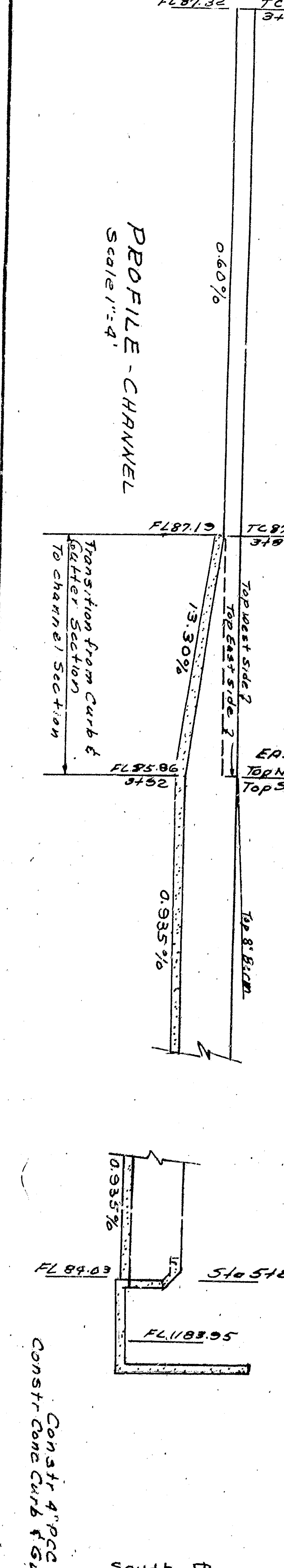




GENERAL NOTES

- 1. All work embodied in this plan shall be done in accordance with the Standard Specifications for Highway Construction and Standard Specifications for Highway Structures, published by the State of California, dated July, 1954, and applicable provisions of Ordinance No. 1984.
- 2. Manhole rim @ 2nd St & Meridian Ave Elev. 1190.20

Scale: 1"=40'



STONE ENGINEERING SHEET 13

DEPARTMENT OF ENGINEERING  
CITY OF SAN BERNARDINO

SECOND ST & MERIDIAN AVE  
OFFSITE IMPROVEMENTS

APPROVED: [Signature] 19 66  
CITY ENGINEER RCL:13533

DWG NO. 3294  
DRAWN BY: RGS  
CHECKED BY: JES

Dec 14 1965  
FLUSH STONE REC-11620